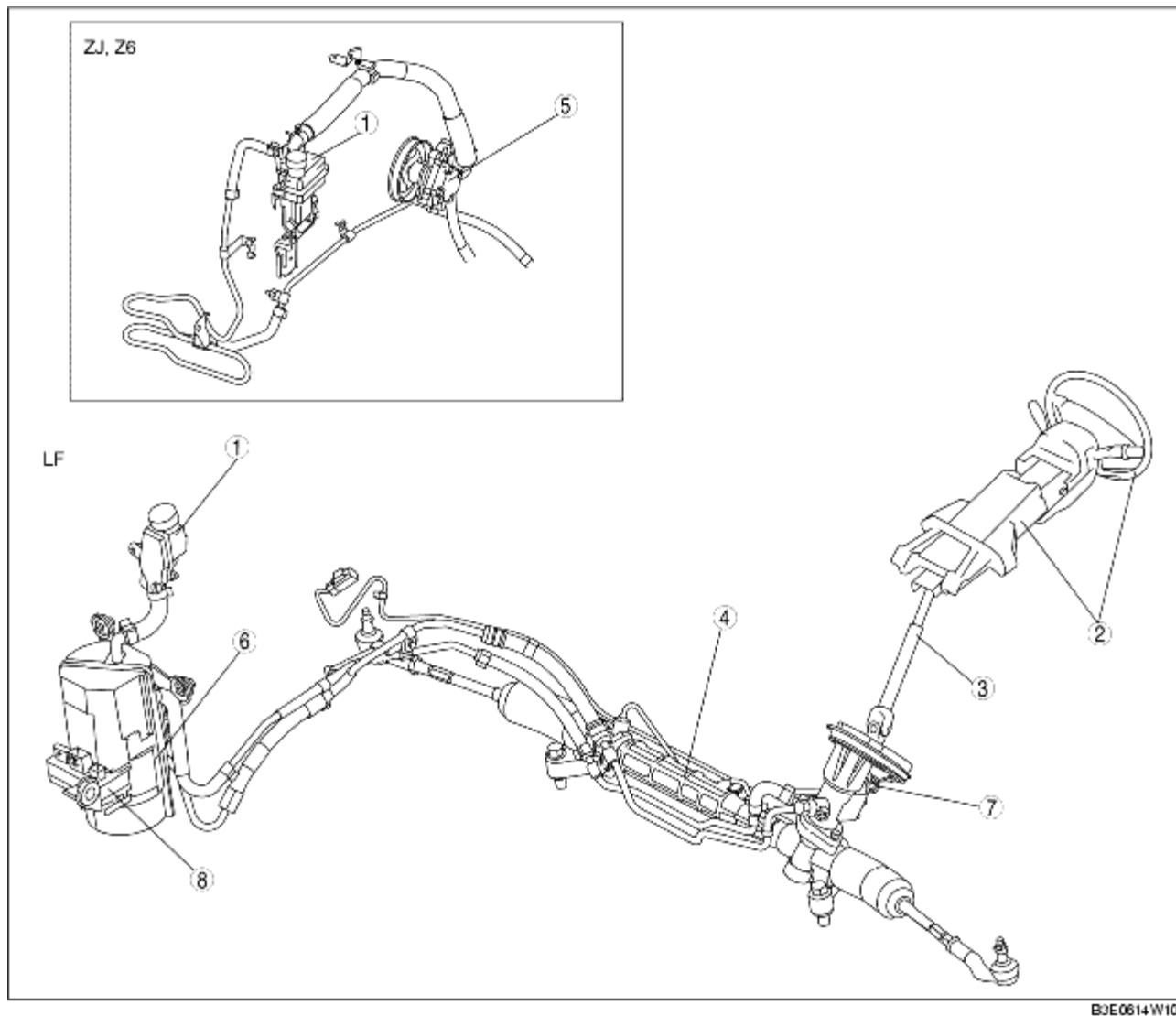


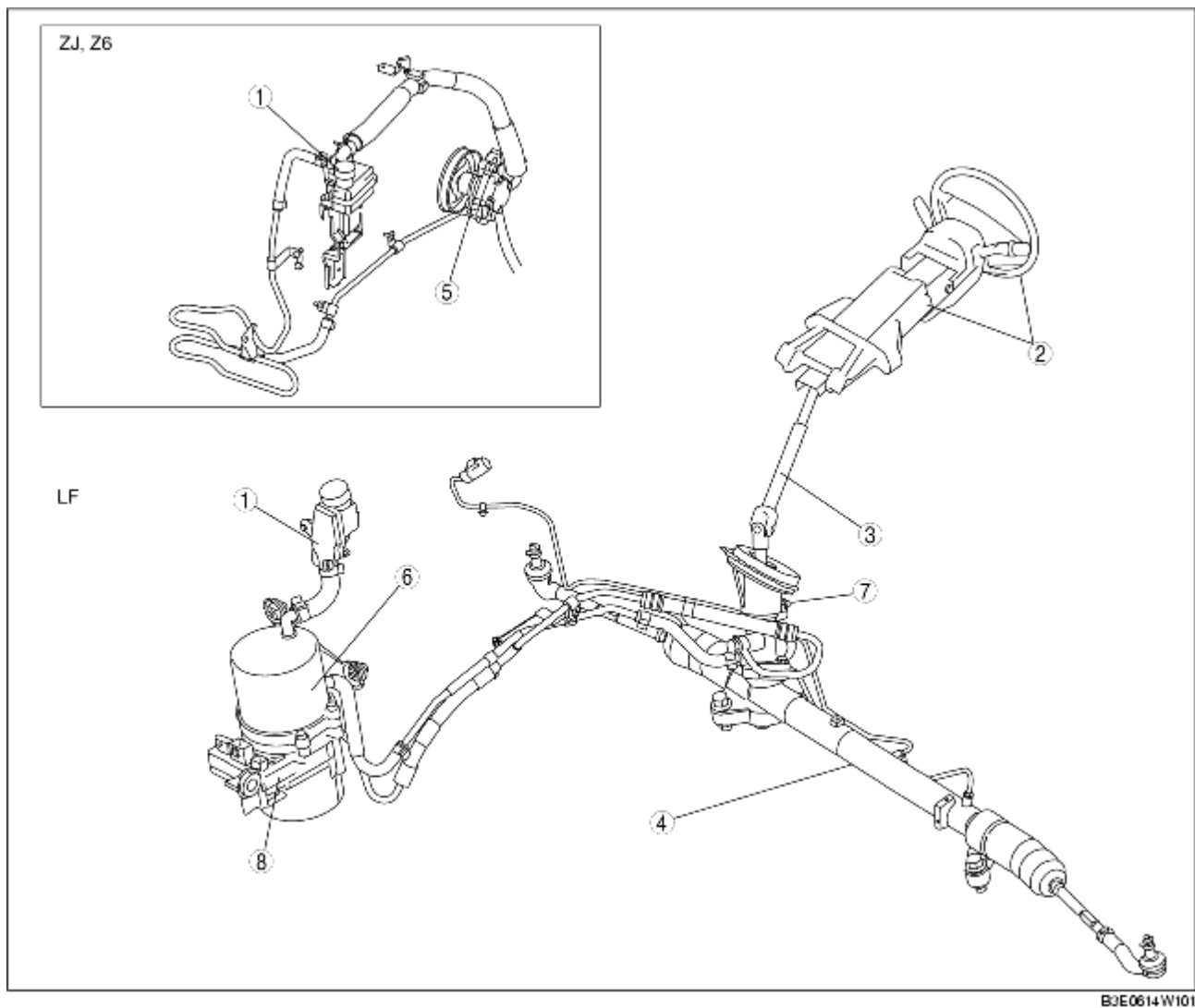
STEERING LOCATION INDEX

B3E061401034W01

L.H.D.

B3E0614W102

R.H.D.



1	Power steering fluid (See POWER STEERING FLUID INSPECTION.)
2	Steering wheel and column (See STEERING WHEEL AND COLUMN INSPECTION.) (See STEERING WHEEL AND COLUMN REMOVAL/INSTALLATION.)
3	Steering shaft (See STEERING SHAFT INSPECTION.)
4	Steering gear and linkage (See STEERING GEAR AND LINKAGE REMOVAL/INSTALLATION.) (See STEERING GEAR AND LINKAGE DISASSEMBLY.) (See STEERING GEAR AND LINKAGE INSPECTION.) (See STEERING GEAR AND LINKAGE ASSEMBLY.)
5	Power steering oil pump (ZJ, Z6) (See POWER STEERING OIL PUMP (ZJ, Z6) REMOVAL/INSTALLATION.) (See POWER STEERING OIL PUMP (ZJ, Z6) DISASSEMBLY/ASSEMBLY.)
6	Electric power steering oil pump (LF) (See ELECTRIC POWER STEERING OIL PUMP (LF) REMOVAL/INSTALLATION.)
7	P/S angle sensor (See P/S ANGLE SENSOR INSPECTION.)
	EHPAS control module (See ELECTRO HYDRAULIC POWER ASSIST STEERING (EHPAS) CONTROL MODULE)

8	INSPECTION.) (See ELECTRO HYDRAULIC POWER ASSIST STEERING (EHPAS) CONTROL MODULE CONFIGURATION.)
---	---